

NETSHIELD Custom Certificates

Overview

The self-signed certificates that ship with NETSHIELD will allow you to set up your appliance, but give security warnings in modern browsers. These security warnings may also affect your ability to use the NetSHIELD Command Center. To fix these issues, you can create trusted certificates for all your appliances.

IMPORTANT: Ensure all your appliances are updated to the latest patch before proceeding.

Certificate Manager

| Certificate Status | | | |
|----------------------------|--|--------------------------|--|
| Issuer Name | 10.10.5.114/emailAddress=support@nets hieldcorp.com | Common Name | 10.10.5.114/emailAddress=support@nets hieldcorp.com |
| Issuer Organizational Unit | NETSHIELD | Subject Alternative Name | |
| Issuer Organization | NETSHIELD | Valid From | Sep 7 13:21:34 2018 GMT |
| Issuer Locality | Nashua | Valid To | Sep 2 13:21:34 2038 GMT |
| Issuer State/Province | NH | | |
| Issuer Country | US | | |

Appliance Certificate

Before generating the appliance certificate, you must import your root certificate into each browser that will access the appliance. If you don't have a root certificate, use the form below to generate one.

To generate the appliance certificate, you must provide a root certificate in PEM format. Upload or paste the private key into the left box, and the certificate into the right box. Press the Generate button when ready. **You may have to refresh or restart your browser to pick up the new certificate.**

Private Key No file selected.

Certificate No file selected.

Root Certificate

If your organization does not already have a root certificate, you can generate one here. Note that only one certificate should be generated! You will import this certificate into every browser that is going to access the NETSHIELD user interface.

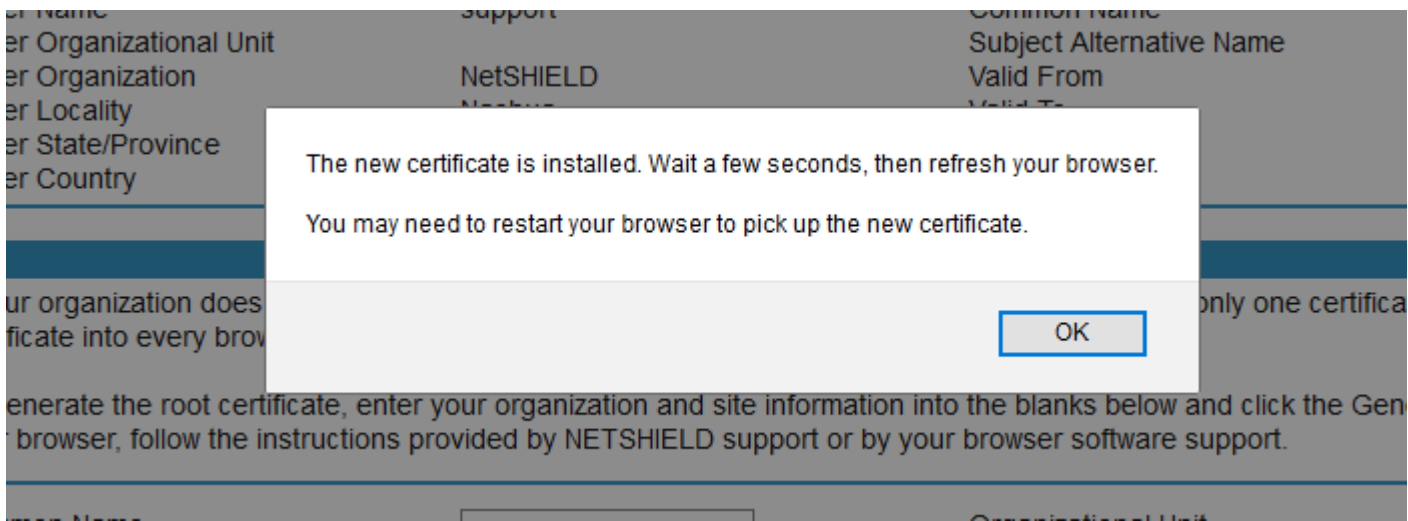
To generate the root certificate, enter your organization and site information into the blanks below and click the Generate button. To import the certificate into your browser, follow the instructions provided by NETSHIELD support or by your browser software support.

| | |
|--|---|
| Common Name <input style="width: 90%;" type="text"/> Organization <input style="width: 90%;" type="text"/> State/Province <input style="width: 90%;" type="text"/> | Organizational Unit <input style="width: 90%;" type="text"/> Locality <input style="width: 90%;" type="text"/> Country <input style="width: 90%;" type="text"/> |
|--|---|

Create the Root Certificate

If your organization does not already have a root certificate, you can generate one here. Note that only one certificate should be generated! You will import this certificate into every browser that is going to access the NETSHIELD user interface.

To generate the root certificate, enter your organization and site information into the blanks below and click the Generate button.



Install the Root Certificate

The root certificate (rootCA.pem) must be imported into every browser that will access the appliance. The procedure for doing this differs for every browser (and across operating systems).

Google Chrome

Click the menu button at the top right, then Settings. Go to Show Advanced Settings, Manage Certificates.

On Windows, click the Trusted Root Certification Authorities tab. On Linux, click the Authorities tab.

Click the Import... button and select the rootCA.pem file you created in the previous step. Exit the dialog and restart the browser.

Mozilla Firefox

Click the menu button at the top right, then Preferences. Go to Advanced, then Certificates, then the View Certificates button.

On Windows, click the Trusted Root Certification Authorities tab. On Linux, click the Authorities tab.

Click the Import... button, and select the rootCA.pem file you created in the previous step. Exit the dialog and restart the browser.

Other Browsers

Enter the Settings (or Preferences) area in your browser. Find a button marked something like Manage Certificates. It may be accessible via an advanced tab or dialog. Click the button to get the lists of which certificates are currently installed on your browser or workstation. Find a tab or area marked Authorities or Certificate Authorities, click it, and look for a button marked Import or Install. Click it and select the 'rootCA.pem' file you created in the previous step. Get out of the certificates dialog, and restart the browser.

For additional support, please refer to your browser's documentation or support information.